

OPTIONAL EQUIPMENT

AVAILABLE ON ALL MODELS:

- TRAILER LENGTH:** 12500mm O/All Length (41') or 14550mm O/All Length (48').
- TRAILER HEIGHT:** 4000mm O/All Height (13'-2") to 4300mm O/All Height (14'-1").
- ROAD TRAIN COUPLING:** 50mm Ringfeder coupling, c/w heavy duty wiring and extended brake lines to rear.
- DUCTING:** Flexible PVC Air Chute along roof line.
- FLOOR:** Flat extruded aluminium floor (smooth or knurled finish) complete with rear floor clousure, high profile air-flow extruded aluminium floor (knurled finish), or Fixed Fibreglass floor (28mm), all suitable for fork truck operation.
- INTERIOR RUB STRIPS:** Kemlite rub strips 300mm (12") high along bottom of each side wall.
- INTERIOR BULKHEAD:** Adjustable sliding / lift up insulated internal bulkhead. Supplied with locking mechanism and sliding tracks fixed to underside of roof, or flexible removable insulated bulkheads.
- DOUBLE LOADER:** Double Loader system c/w 'E' Track System fitted on side walls. Supplied c/w twelve (12) (A-Trailer) or twenty two (22) (B-Trailer) aluminium bars and storage locker box.
- REAR DOORS:** TODCO Insulated Roller rear door – 28mm or 64mm thick Insulated, complete with safety locking latch and seals. Stainless steel rear door hardware.
- WATER TANK:** 60 litre, optional plastic or polished aluminium, fitted near side.
- AUXILLIARY FUEL TANK:** Optional 450 litre aluminium fuel tank complete with gauge supplied with air discharge, with self-sealing couplings at front and rear.
- TOOLBOX:** Steel approx. 1200 long, fitted near side.
- LASHING POINTS:** Eight (8) off Sea lashing points, two (2) at front, two (2) at landing leg area, two (2) in front of suspension and two (2) at rear of unit.
- OPTIONS:** Other options are available on request. Southern Cross Vans pride themselves on producing 'custom-built' trailers to suit individual customer requirements.



ARCTIC STAR

REFRIGERATED PRODUCT RANGE



SOUTHERN CROSS VANS PTY LTD ABN 92 754 132 648 ACN 087 152 663

SOUTH AUSTRALIA
 MANTHORPE STREET
 DRY CREEK 5094
 PH: (08) 8260 2944 FAX: (08) 8349 7006

VICTORIA
 58-62 NISSAN DRIVE
 DANDENONG 3175
 PH: (03) 9701 3255 FAX: (03) 9701 3399

QUEENSLAND
 1048 BEAUDESERT ROAD
 COOPERS PLAINS 4108
 PH: (07) 3246 5410 FAX: (07) 3246 5453

Feb. 2006



Custom-Built Trailers & Personalised Service

COMPANY BACKGROUND

Southern Cross Trailers, established in Adelaide in 1976, has over 30 years industry experience in manufacturing thousands of trailers ranging from Flat Tops, Skels, Curtain Siders, Drop Decks, Extendibles to today's more specialized units.

Southern Cross Vans began operating also in Adelaide in April 1999. Since then the company has produced hundreds of vehicles consisting of Rigid Bodies, Semi-Trailers, Dry Freight, Chiller and Freezer configurations.

In December 2004, Southern Cross Vans opened its Victorian sales and production facility in

Dandenong South. The expansion into Victoria reflects the positive trends within the Van division, to supply equipment to all parts of the nation, in particular the eastern states.

Southern Cross Vans now offer sales and manufacturing services in South Australia and Victoria, a sales office in Queensland, as well as a sales and service dealer networks across all states.

The business provides transport solutions ranging from Refrigerated (-28°C) through to Chiller and Dry Bulk Freight units for a number of industry sectors, including local and interstate distribution.

MANUFACTURING FACILITIES

The manufacturing facility at Dry Creek, South Australia, together with its sales & manufacturing facility at Dandenong South, Victoria, now presents the opportunity to increase the company's overall manufacturing capacity and status in the marketplace.

Both modern factories, which utilize the very latest AutoCAD drawing systems, up to date assembly jigs, automated and controlled manufacturing methods and in-house quality inspection processes, have over 75 years of collective experience in the body building trade.

Together with a qualified, stable factory work force, Southern Cross manages projects with precise dead lines, and the capability of producing first class products to suit Australia wide-road transport conditions.

The introduction of in-house semi and automated processes, for the production of both FRP and Insulated Fibreglass panels, give Southern Cross, not only the increased manufacturing capacity, but a better controlled quality product with the flexibility to accommodate any varying options for each and every customer.

PRODUCTS



Victorian Manufacturing facility located at Dandenong South



MODELS AVAILABLE:

Dry Freight, Chiller, Super Chiller, Freezer, Double Loader, Multi-Temp, & Meat Hangers.

CONFIGURATIONS:

Semi Trailers, Lead Roll Back 'B' Double Trailers, Road Trains & Rigid Bodies.



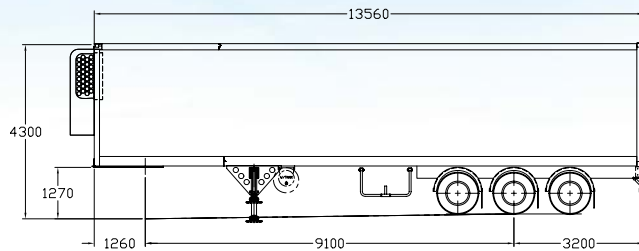
SOUTHERN CROSS Vans



ARCTIC STAR

Insulated 45' Trailers

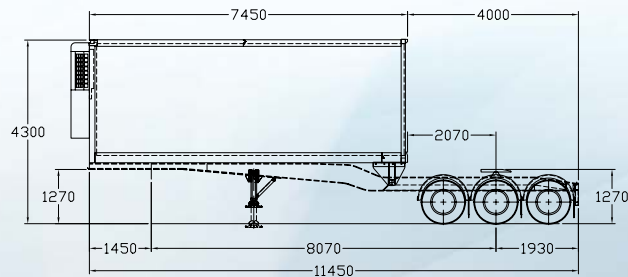
Freezer (-28°C), Super Chiller (-18°C), Chiller (-0°C)



DIMENSIONS:	Overall Length	13560mm (44'-6")	Internal Length	13180mm (43'-3")
	Overall Width	2500mm (8'-2 1/2")	Internal Width	2400mm (7'-10")
	Overall Height	4300mm (14'-1")	Internal Height	2730mm (8'-11 1/2")
	(Internal Dimensions Based on 'Arctic Star' Freezer Configuration)			

Insulated Roll-Back A-Trailers

Freezer (-28°C), Super Chiller (-18°C), Chiller (-0°C)



DIMENSIONS:	Overall Length	7450mm (24'-5")	Internal Length	7175mm (23'-6 1/2")
	Overall Width	2500mm (8'-2 1/2")	Internal Width	2400mm (7'-10")
	Overall Height	4300mm (14'-1")	Internal Height	2640mm (8'-8")
	(Internal Dimensions Based on 'Arctic Star' Freezer Configuration)			

WARRANTY: 3 year warranty on all 'Southern Cross' manufactured vans. Ancillary or optional equipment, normal manufacturers warranty will apply.



ARCTIC STAR

Freezer (-28°C), Super Chiller (-18°C), Chiller (-0°C)

WALLS & ROOF:

Moulded fibreglass incorporating woven roven and chopped strand mat. Bonded to rigid polyurethane foam with fibreglass ribs between each block of foam.

FLOOR:

High profile air flow extruded aluminium floor suitable for fork truck operation. Fixed fibreglass floor panel incorporating a polyurethane foam core.

INSULATION:

Top quality rigid polyurethane foam, 36kg per cubic metres density.

Freezer (-28°C)

125mm (5") thick in roof, 100mm (4") in front wall, **38mm (1 1/2") thick in side walls**, 105mm (4 1/4") thick in floor and 80mm (3 1/4") rear doors.

Super Chiller (-18°C)

75mm (3") thick in roof, 100mm (4") in front wall, **25mm (1") thick in side walls**, 105mm (4 1/4") thick in floor and 50mm (2") rear doors.

Chiller (-0°C)

75mm (3") thick in roof, 100mm (4") in front wall, **19mm (3/4") thick FRP Ply side walls**, 105mm (4 1/4") thick in floor and 19mm (3/4") FRP rear doors.

TOP SIDE RAIL:

6061-T6 extruded aluminium section (polished).

BOTTOM SIDE RAIL:

Extruded aluminium section, bonded to side walls and fastened to bolsters (polished).

BOLSTERS:

RSJ bolsters at 400mm (16") centres. (galvanized)

REAR DOORS:

Double insulated rear doors with full width clear door opening. Each door is fitted with four (4) hinges, two (2) anti-rack camlocks. Each insulated door is double sealed with extruded PVC exterior & flexible interior seal. Each Ply door is sealed extruded with PVC exterior seal. All door gear galvanized with door hold backs and protector plates fitted for each door. Galvanized rear door frame. c/w stainless steel grab handle and 3 step fold out ladder fitted rear road side. Incorporated in the top and bottom rails (polished).

EXTERIOR RUB STRIPS:

Fibreglass rub strips 300mm (12") high along bottom of each side wall.

INTERIOR RUB STRIPS:

Four (4) interior lights flush mounted wired to a switch located at the front.

INTERIOR LIGHTS:

Wiring loom with Five (5) side clearance lights each side and a centre flasher together with two (2) rear stop tail and flasher lights per side, seven pin base and 40 amp coupling at front. Top stop tail and flasher lights also fitted. Regulation lighting to ADR 38. All lighting LED MultiVolt.

ELECTRICAL:

Boil-in standard 50mm (2") king pin.

KING PIN:

SUSPENSION AXLES:

Clients preferred choice. Airbag or Spring, Drum or Disc. Optional Raise lower valve and weight gauge. Fitted with Hubodometer as standard. Tri-Axle or Tandem Axle configuration.

WHEELS & TYRES:

Clients preferred choice. Spider or Disc (Aluminium or Steel)

BRAKES:

ADR 38 Requirements. Bayonet couplings terminate at the front of the unit.

LANDING LEGS:

Optional ABS or EBS Brake system 12V/24V, supplied with pole rings/sensors on two axles.

SPARE TYRE CARRIER:

Two speed, single side winding landing legs, with compensating feet.

BUMPER:

Dual spare tyre carrier. (galvanized)

MUDGUARDS:

Rectangular steel under-run bumper at rear (galvanized) and full height rubber dock buffers

A-Trailer

Plastic round mudguards over tri-axle, c/w anti spray mudflaps front and rear of suspension. Optional aluminium or stainless steel mudguards.

B-Trailer

Polished aluminium 1/4" guards front and rear of suspension. Optional full plastic/aluminium or stainless steel mudguards c/w anti spray mudflaps front and rear of suspension.

REFRIGERATION PLANT:

Clients preferred choice. Standard or Multi Temp.

FRT WALL BULKHEAD:

Fibreglass mould air return bulkhead. Optional galvanized mesh type.

LOAD CONTROL:

Two rows of round hole load lok fitted each side wall full length. Cast end pieces also fitted. Optional: additional full length rows and shoring bars.

FINISH:

The interior panels are pigmented blue, the exterior panels are pigmented white.

B-DOUBLE EQUIPMENT:

Aluminium sections polished and running gear is painted in enamel paint to client's specified colours. The rollback body is operated by a 12-volt motor driving a 50mm wide double duplex chain with hydraulic power pak. The body rolls on four (4) hardened steel rollers and is locked by two (2) Selectomatic locking pins. A box is supplied to house the controls for fore and aft movement. The roller tracks at the rear of the unit are sloped so floor level will suit most conventional dock heights. Holland Hitch turnable fitted to skeletal main rails with brake and electrical connections supplied at rear, with an "Anderson" plug power connector.

